

**KÖSTER**



# KÖSTER Injection Systems

References





Philosophy:

Cutting edge system  
solutions & support





Dr. Dieter Köster  
CEO

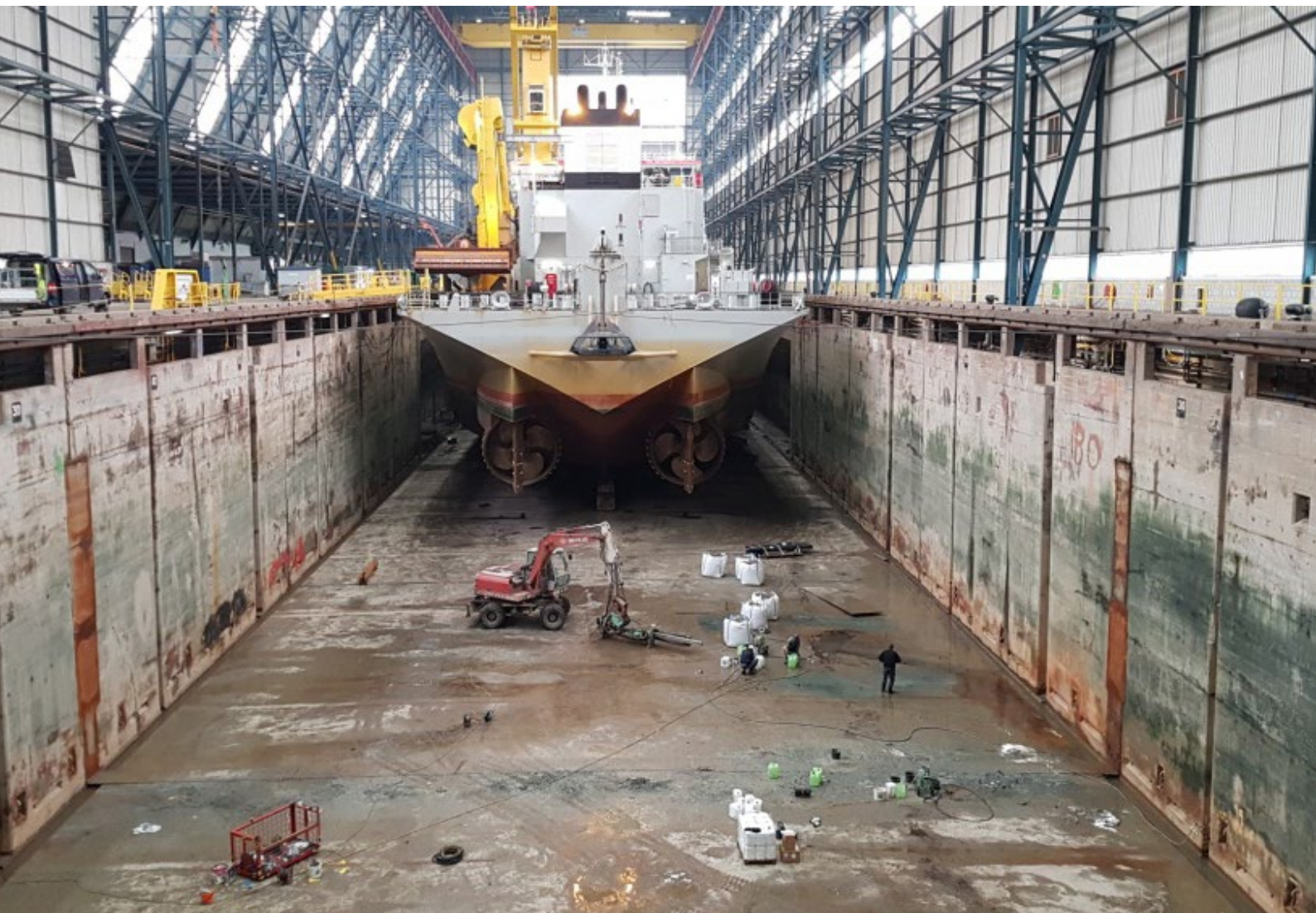
„Sustainable solutions  
of excellent quality and  
comprehensive support –  
that you can rely on“



Johann Köster  
Founder

Chairman of the supervisory  
board of KÖSTER BAUCHEMIE  
AG and CEO of the German  
roof organization of all german  
construction chemistry  
producers in the 4<sup>th</sup> period of  
office.





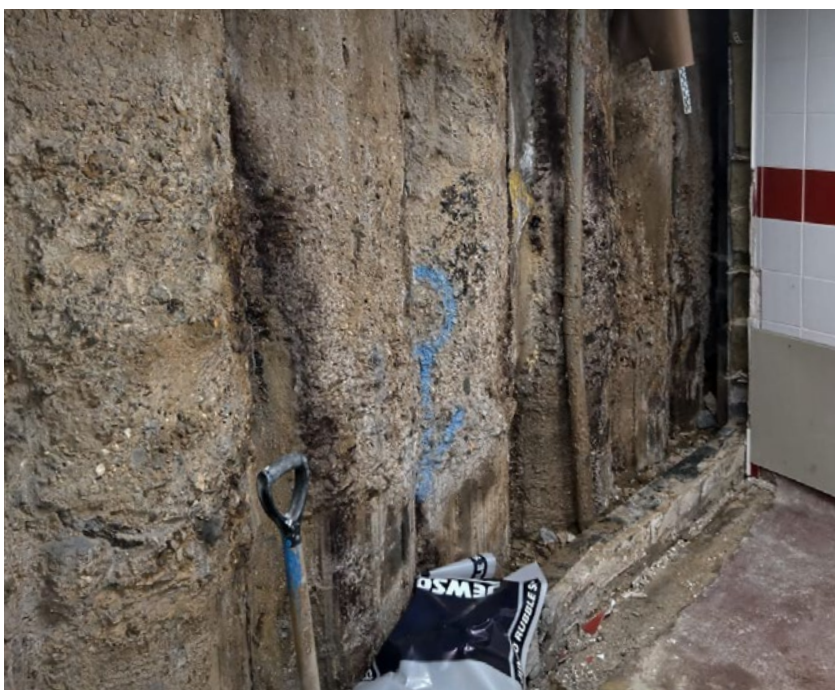
## SHIPYARD

**Description:** Successful joint injection between two major concrete slabs of approx. 7 m thick as well as void injection along horizontal cracks in the concrete slabs.

**Products:** KÖSTER Injection Gel G4  
KÖSTER Injection Gel S4





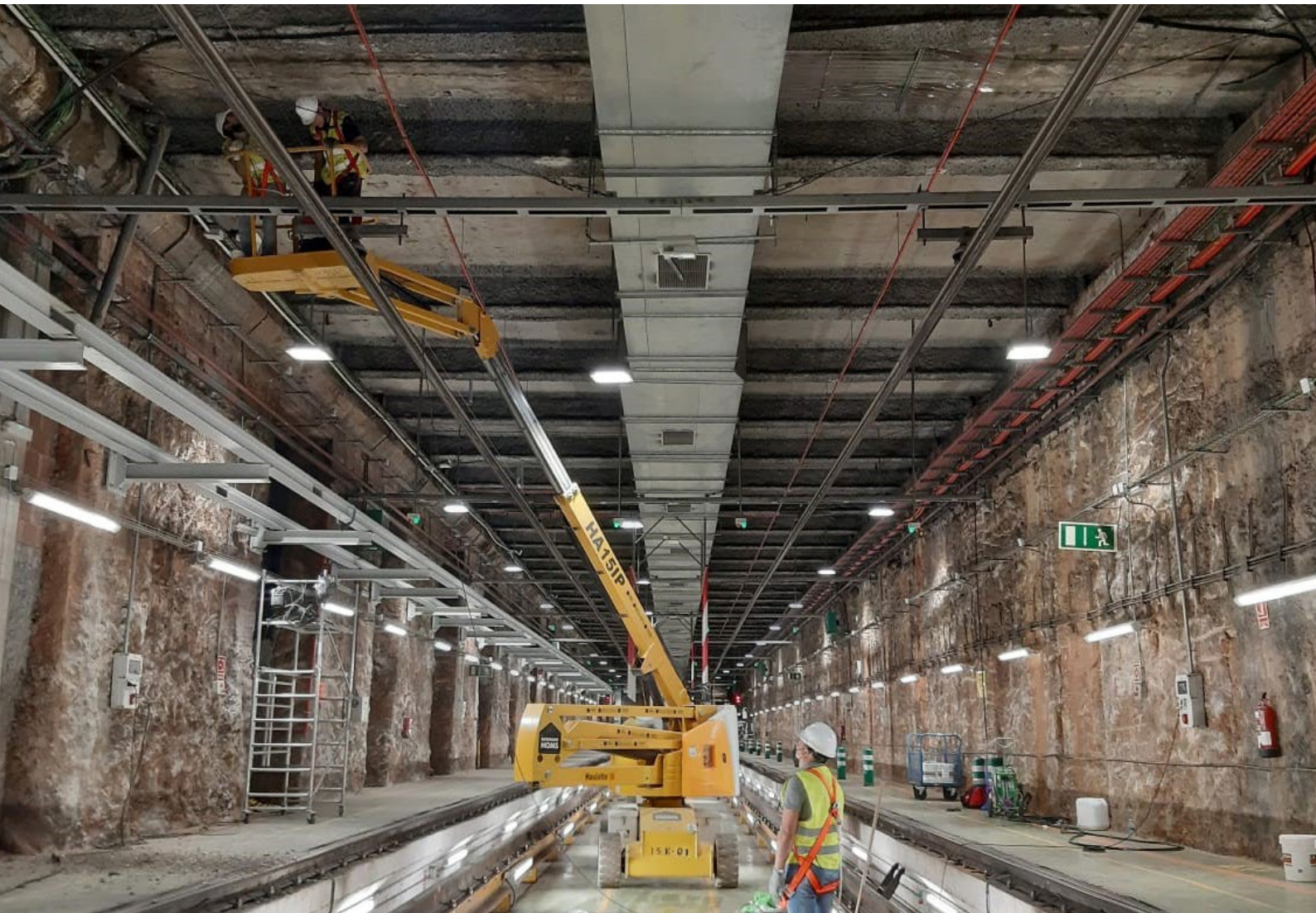


## PLAZA HOTEL

**Description:** Curtain injection with KÖSTER Injection Gel G4 on a leaking pile wall foundation from a hotel located only 150 m from the Thames river.

**Product:** KÖSTER Injection Gel G4

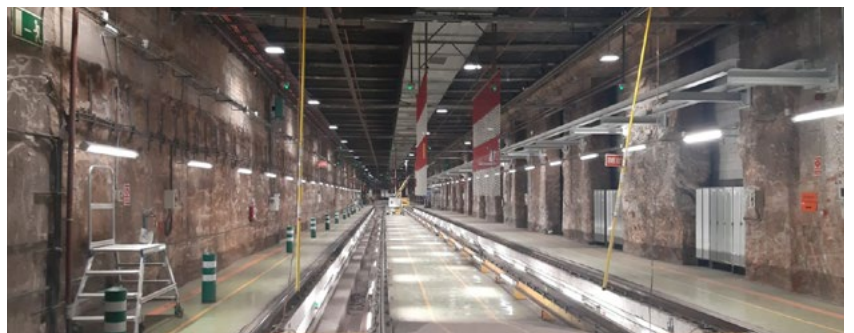




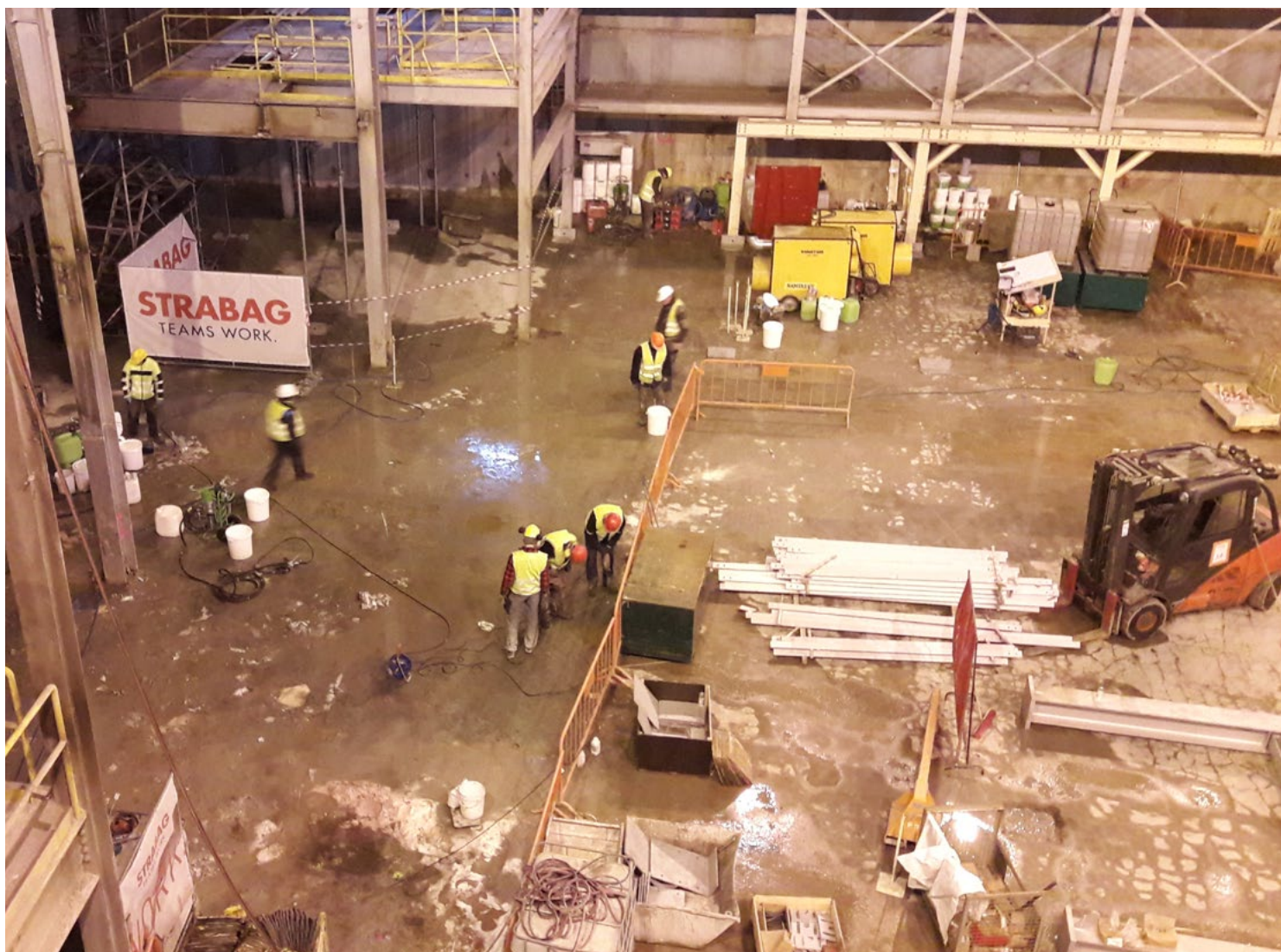
## BARCELONA METRO TUNNELS

**Description:** Injection of expansion joints on Barcelona Metro.

**Product:**  
KÖSTER Injection Gel S4/B+







## GLASSWORKS

**Description:** Waterproofing of a leaking cracked foundation slab through a concrete injection after a furnace in a glass factory was removed for the renovation of the building.

**Product:** KÖSTER Injection Gel G4

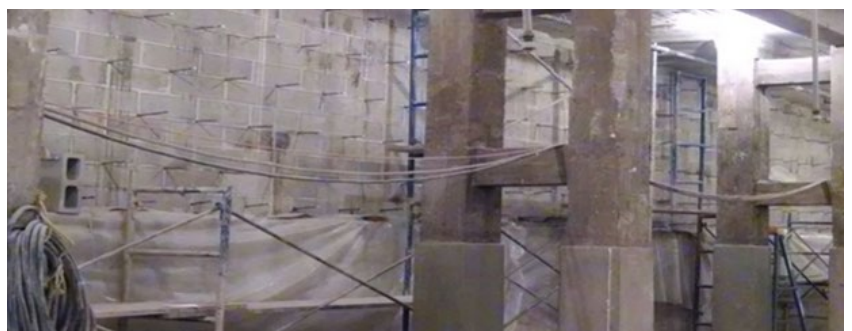




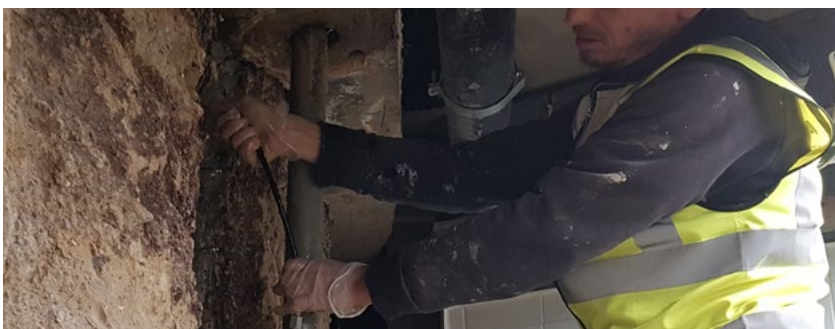
## EMPIRE STATE BUILDING

**Description:** Penetrating water from outside into the basement

**Product:** KÖSTER Injection Gel G4





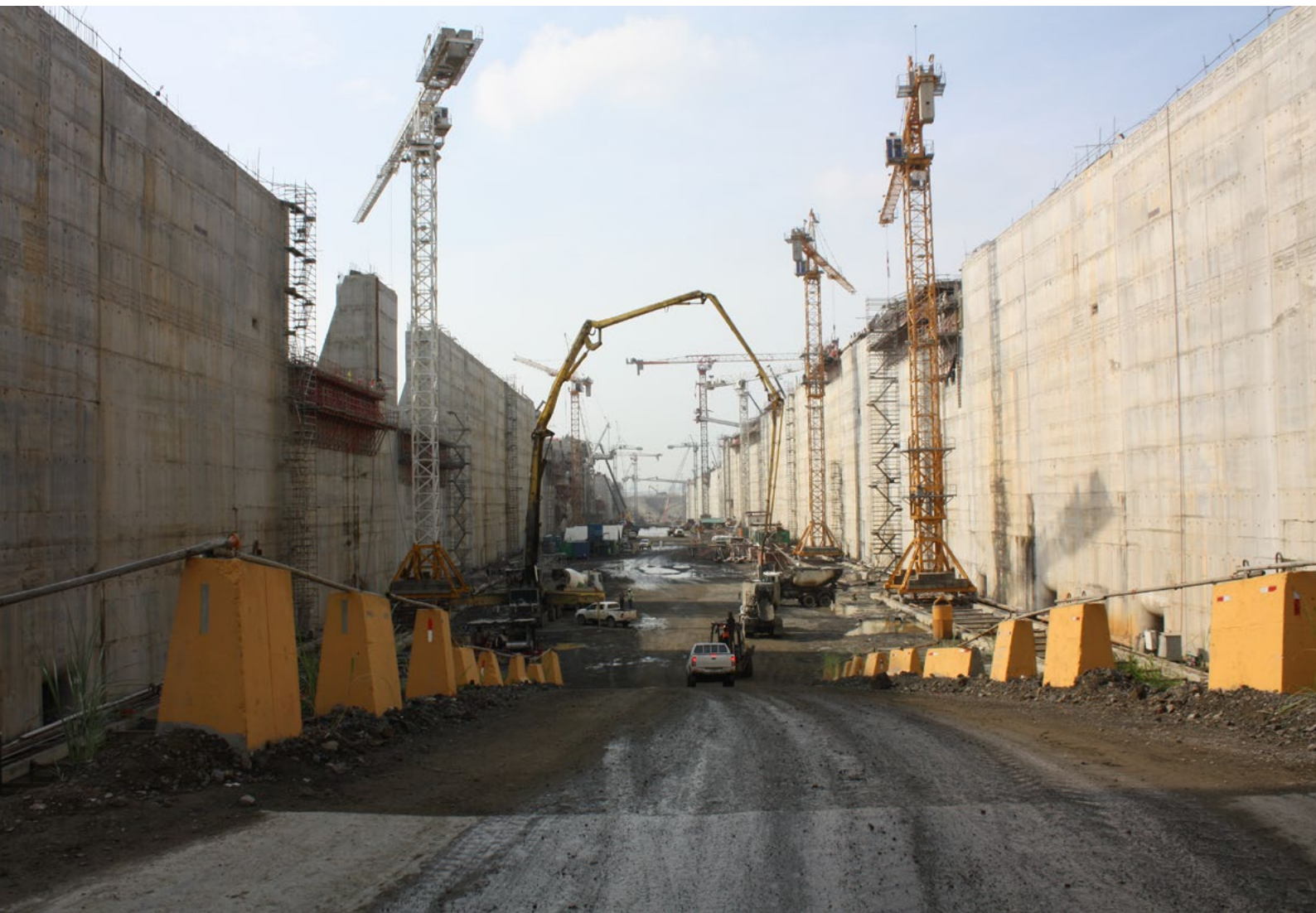


## PARK PLAZA HOTEL

**Description:** Repair of heavy water ingress between secant piles into five below ground levels at a prestigious London Hotel.

**Products:** KÖSTER 2 IN 1  
KÖSTER IN 7  
KÖSTER Injection Gel G4  
KÖSTER Injection Gel S4





## PANAMA CANAL

**Description:** Crack Injection on Panama Canal.

**Product:** KÖSTER 2 IN 1







## AHMED HAMDİ TUNNEL (SUEZ TUNNEL)

**Description:** Sealing about 100 leaking joints in an underwater tunnel.

**Product:** KÖSTER Injection Gel S4/B+

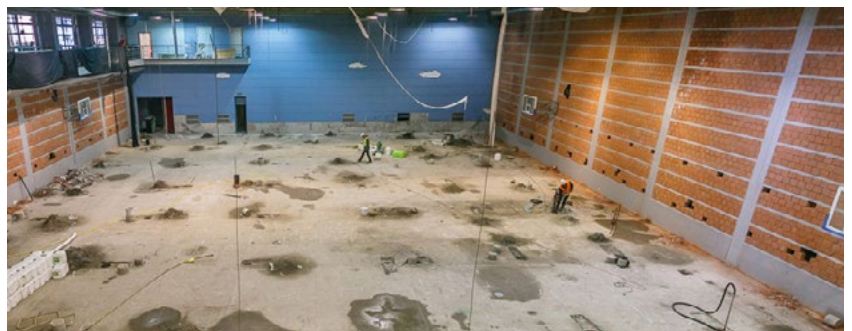




## KOMBANK-ARENA

**Description:** Repairing a failed waterproofing system between the slab and foundation.

**Product:** KÖSTER Injection Gel G4







#### OLYMPIC SWIMMING POOL

**Description:** Repair of dry and leaking cracks in the concrete substrate.

**Product:** KÖSTER 2 IN 1





#### CLUB DE GOLF LOS ENCINOS

**Description:** Pressure injection of water bearing cracks.

**Product:** KÖSTER 2 IN 1







### "WALLHÖFE" BUSINESS AND RESIDENTIAL DISTRICT

**Description:** In this property in Ratingen, existing pump shafts through which water penetrated into the building's underground car park were permanently sealed using acrylic gel injection.

**Products:** KÖSTER Acrylic Gel Pump  
KÖSTER Injection Gel S4  
KÖSTER KD 2 Blitz Powder





## WATER POWER PLANT

**Description:** Stopping active water leakages with injection.

**Product:** KÖSTER IN 1







## HSUEHSHAN TUNNEL

**Description:** Internal waterproofing and injection of the Hsuehshan Tunnel, the longest Taiwanese tunnel with 12,942 km total length.

**Product:** KÖSTER 2 IN 1





## PALM ISLAND JUMEIRAH

**Description:** Sealing of leaking anchor bolts.

**Products:** KÖSTER 2 IN 1  
KÖSTER IN 1  
KÖSTER IN 2







## GROSVENOR HOUSE II

**Description:** Leakages in shoring walls were stopped.

**Products:** KÖSTER 2 IN 1  
KÖSTER IN 1  
KÖSTER IN 2

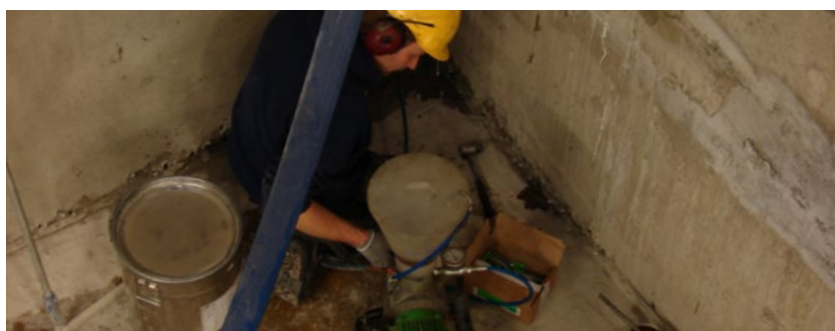




## POWER PLANT

**Description:** Water bearing cracks and cold joints injections.

**Products:** KÖSTER 2 IN 1  
KÖSTER IN 7







## APPLE CAMPUS

**Description:** Injection of high pressure water bearing cracks and joints in concrete slab

**Product:** KÖSTER Injection Gel G4





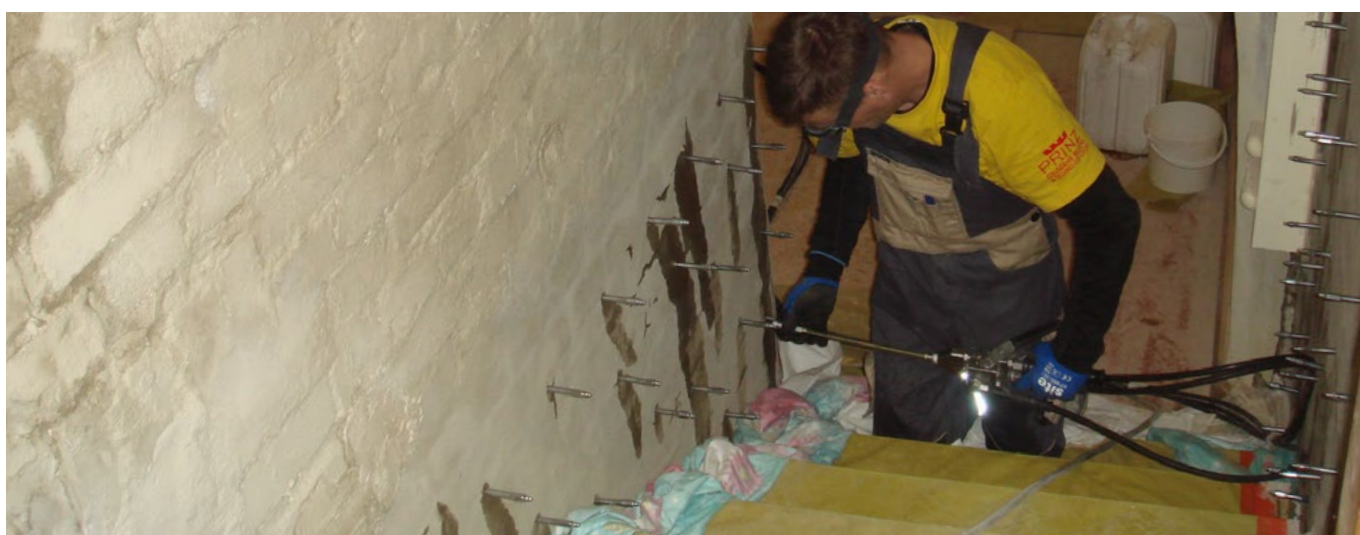
## KIRKLAND GOLD MINE SHAFT REPAIR

**Description:** Curtain injection against widespread water ingress through cracks, joints and corners in the foundation walls.

**Product:** KÖSTER Injection Gel G4







## MONASTERY

**Description:** Meeting Room renovation. Waterproofing from the negative side and structural injection.

**Product:** KÖSTER Injection Gel G4

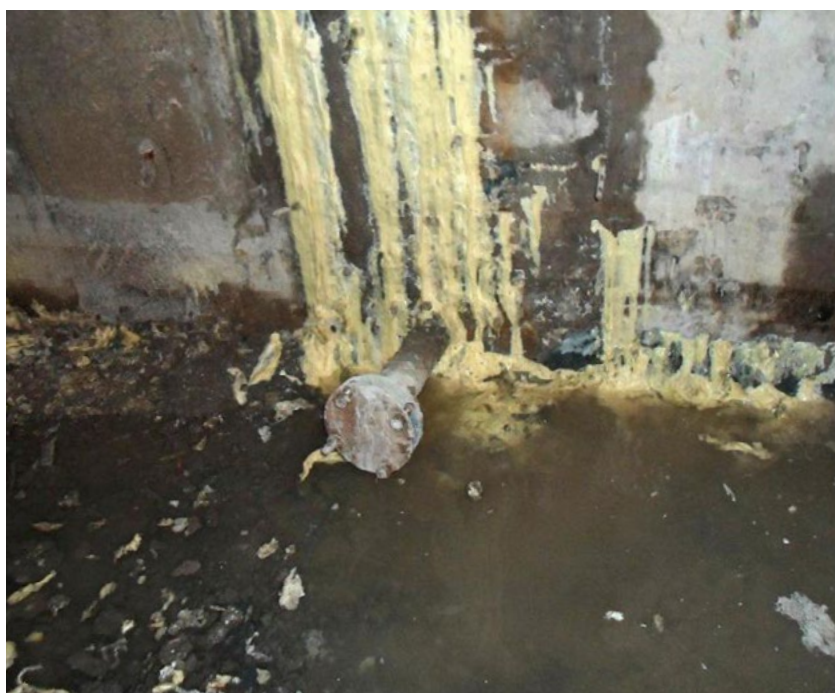




## SKYSCRAPER

**Description:** Pressure injection of water bearing cracks

**Products:** KÖSTER 2 IN 1  
KÖSTER IN 7







## SPANISH EMBASSY

**Description:** Crack injection in the underground car park.

**Product:** KÖSTER 2 IN 1

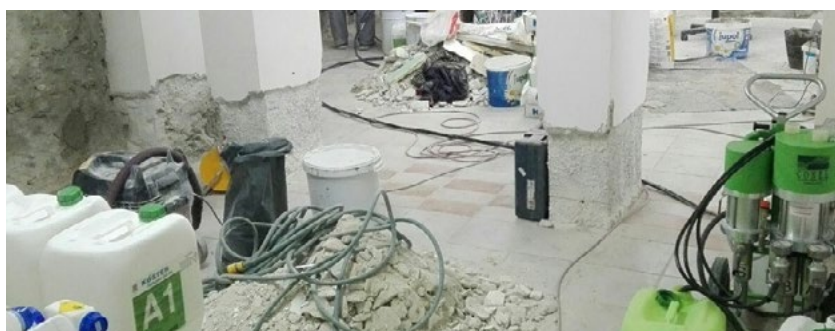




## CITY GAS WORKS

**Description:** Basement renovation executed by injecting the walls throughout the cross-section of the building.

**Product:** KÖSTER Injection Gel G4







## UNDERGROUND RAILWAY TUBES

**Description:** Curtain injection and area injection.

**Product:** KÖSTER Injection Gel G4

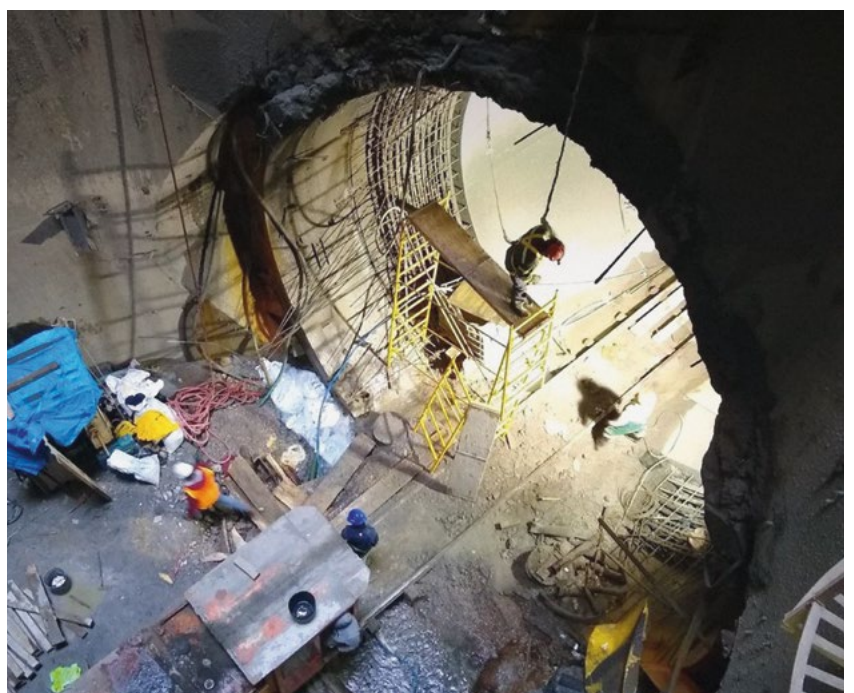




### TÚNEL EMISOR ORIENTE

**Description:** Waterproofing heavy water ingress (30 liters/second) at a depth of 80 meters.

**Products:** KÖSTER IN 1  
KÖSTER IN 7







## POWER PLANT – WATER TREATMENT

**Description:** Injection of expansion joint over the entire height to prevent unwanted water ingress

**Product:** KÖSTER Injection Gel G4

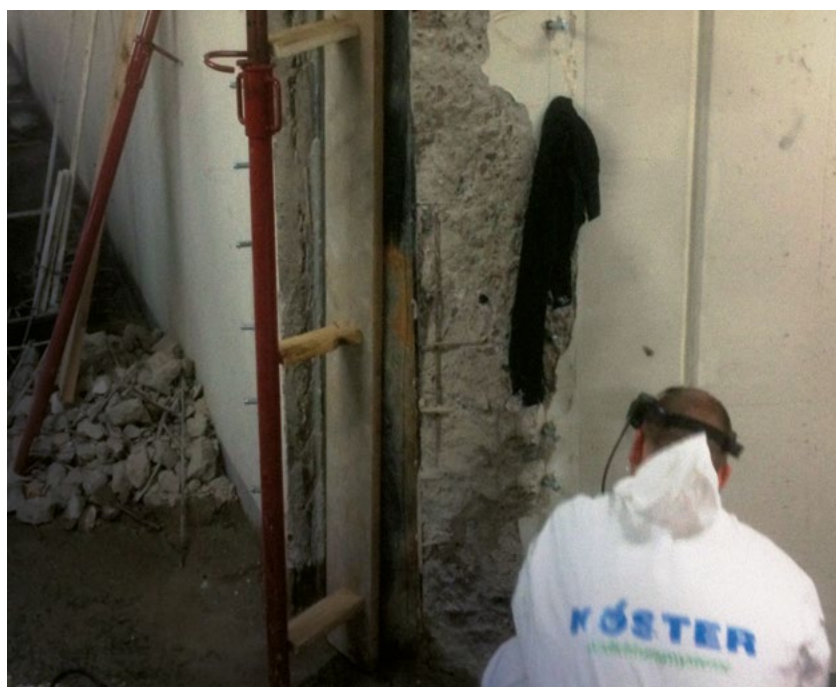




#### UNDERGROUND CAR PARK

**Description:** Expansion joint replacement

**Product:** KÖSTER Injection Gel G4





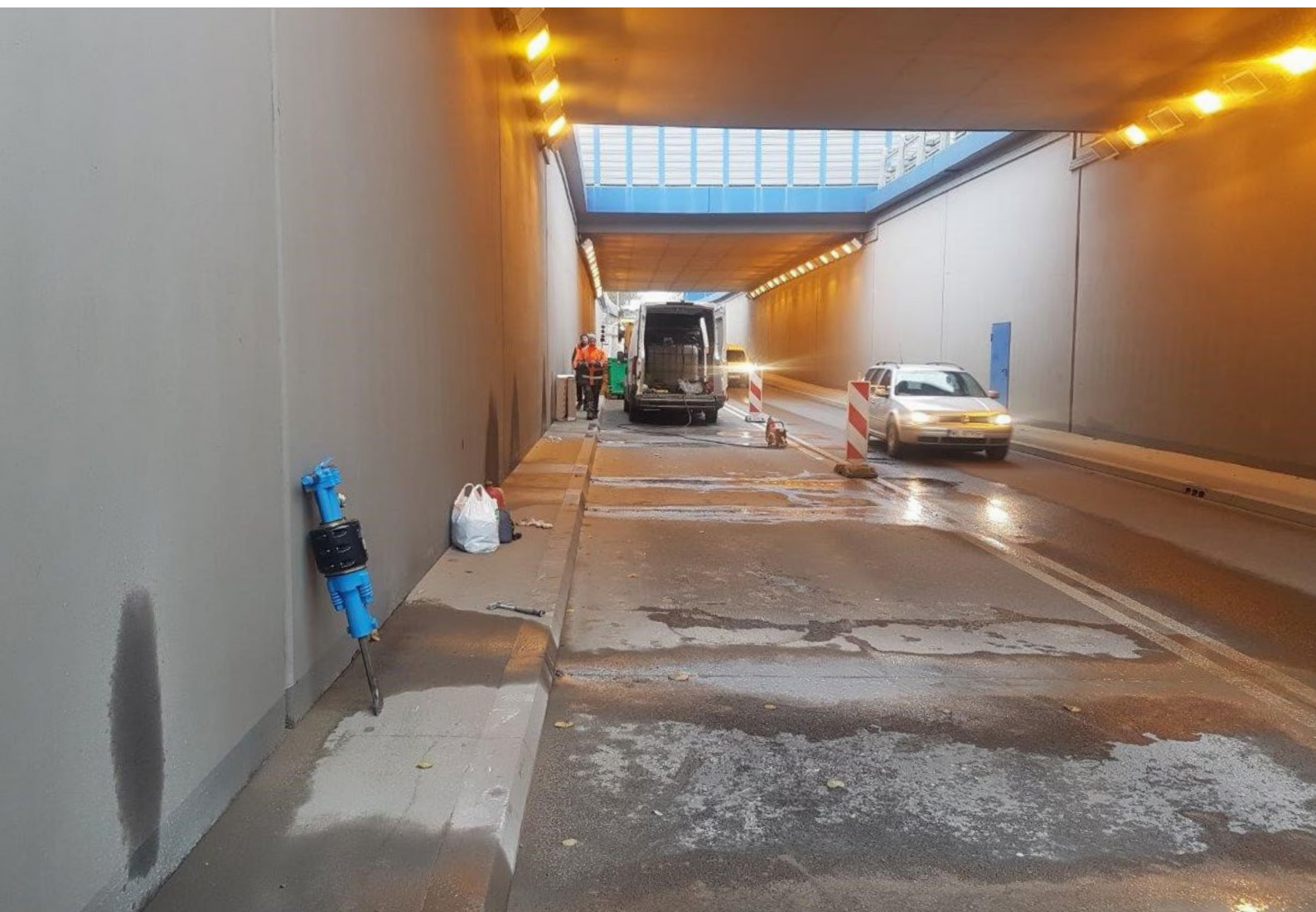


## SEWAGE SHAFT

**Description:** Sealing of joints on concrete rings made of prefabricated elements, diameter 160cm

**Product:** KÖSTER 2 IN 1





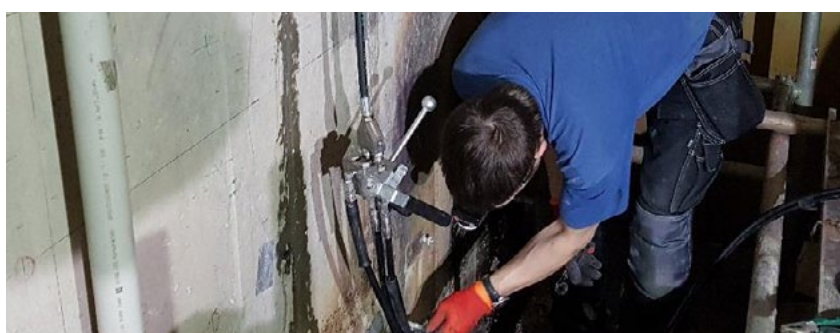
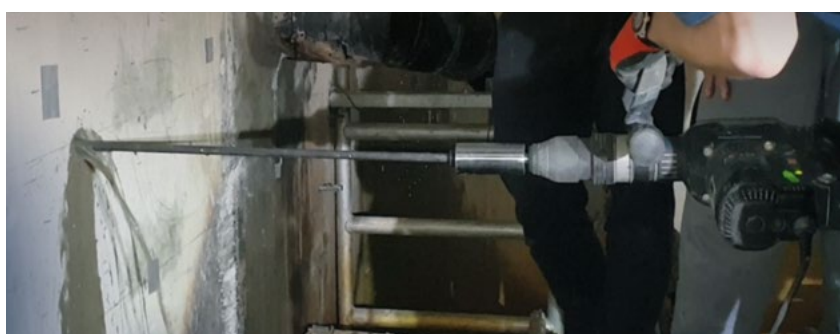
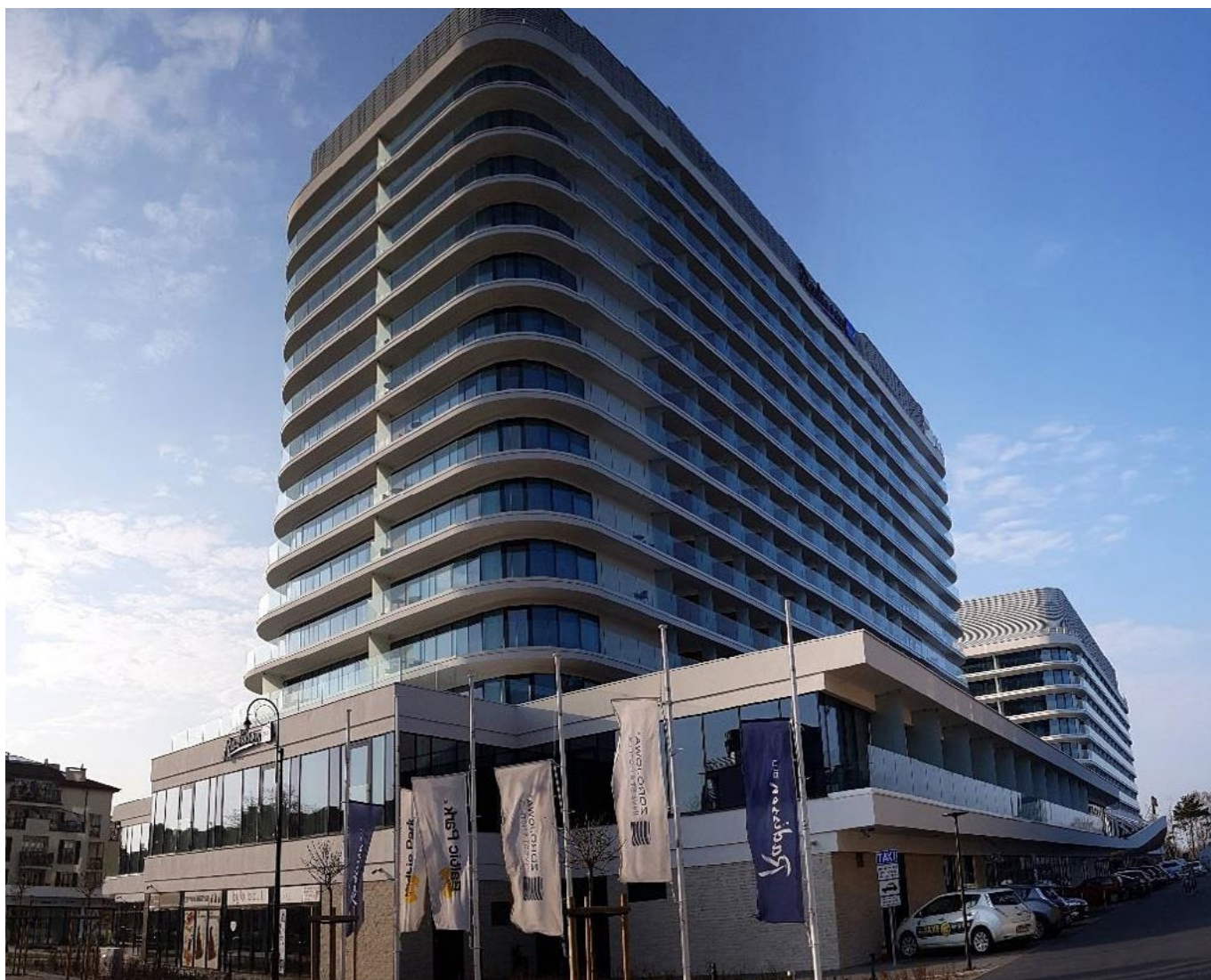
## ROAD TUNNEL UNDER RAILWAY LINE 9

**Description:** Sealing tunnel expansion joints in walls and bottom plate. Pressure injection of KÖSTER acrylic gel.

**Products:** KÖSTER Injection Gel G4  
KÖSTER Injection Gel J4







## HOTEL RADISSON BLU RESORT

**Description:** Waterproofing works by horizontal array of soil stabilization lances and curtain injection

**Product:** KÖSTER Injection Gel G4





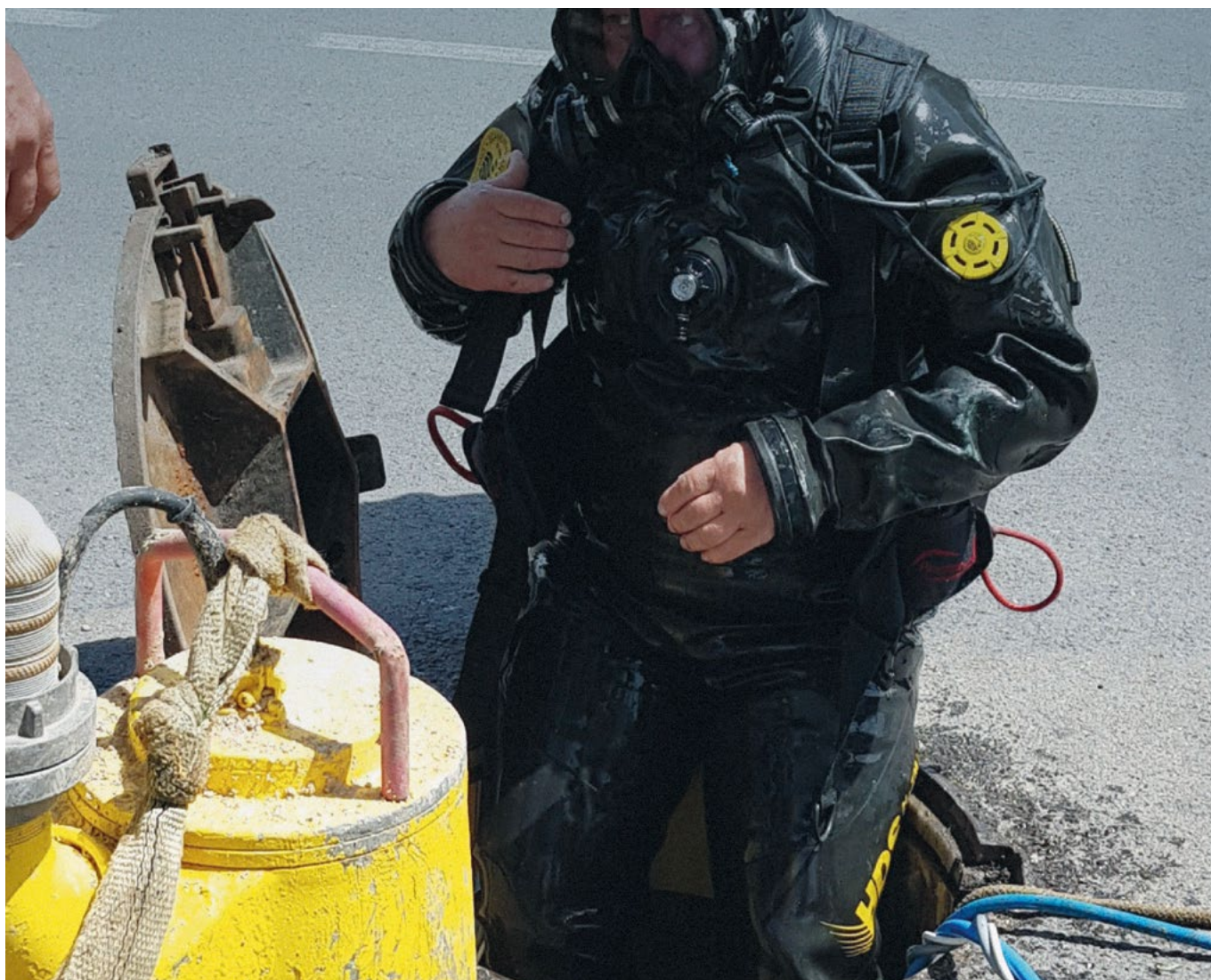
## RAILWAY UNDERPASS

**Description:** Curtain injection through the ceiling (approx. 3.5 tons of KÖSTER Injection Gel G4)

**Product:** KÖSTER Injection Gel G4







## SHAFTS NEAR THE SEA

**Description:** Closing the water penetration into the shaft, located near the sea and flowing water from the surrounding hills.

**Products:** KÖSTER Injection Gel G4  
KÖSTER Micro Grout 1 C





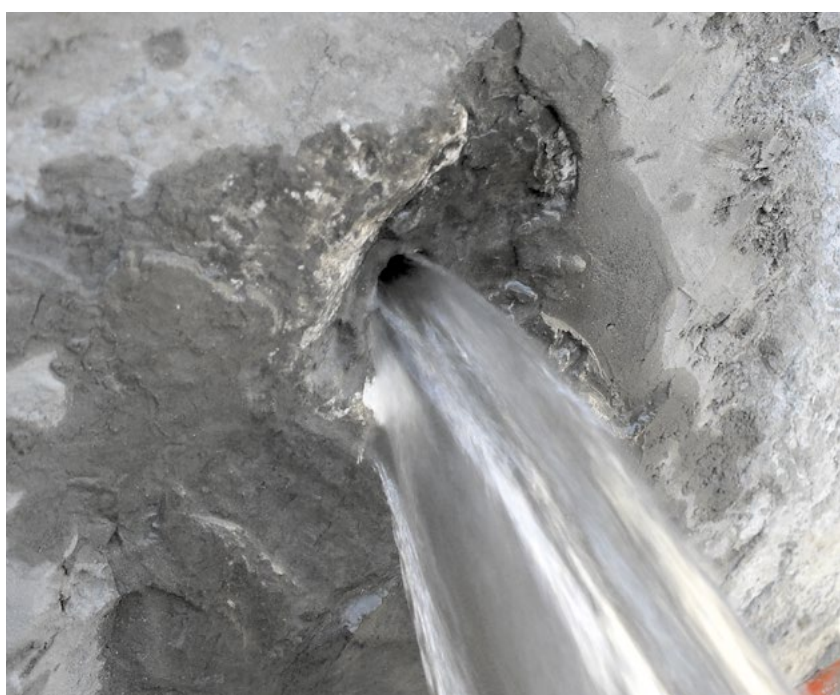
## RIGA CASTLE

**Description:** Installation of retroactive horizontal barrier on a historical castle with over 2 m thick brick walls

**Product:** KÖSTER Injection Gel G4







## EMS BARRIER

**Description:** Cracks and leaks inside the barrier were repaired with KÖSTER injection materials

**Product:** KÖSTER 2 IN 1

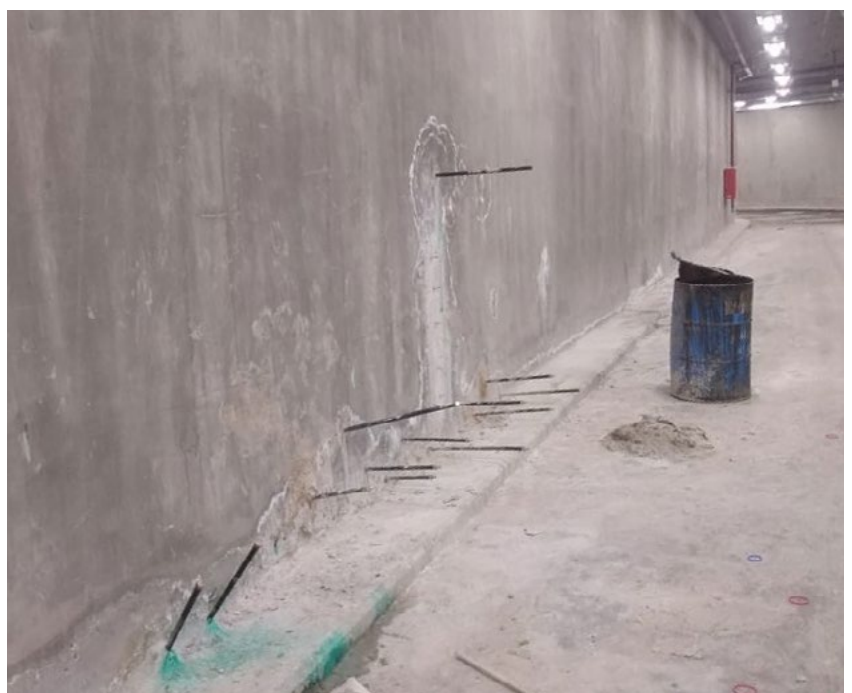




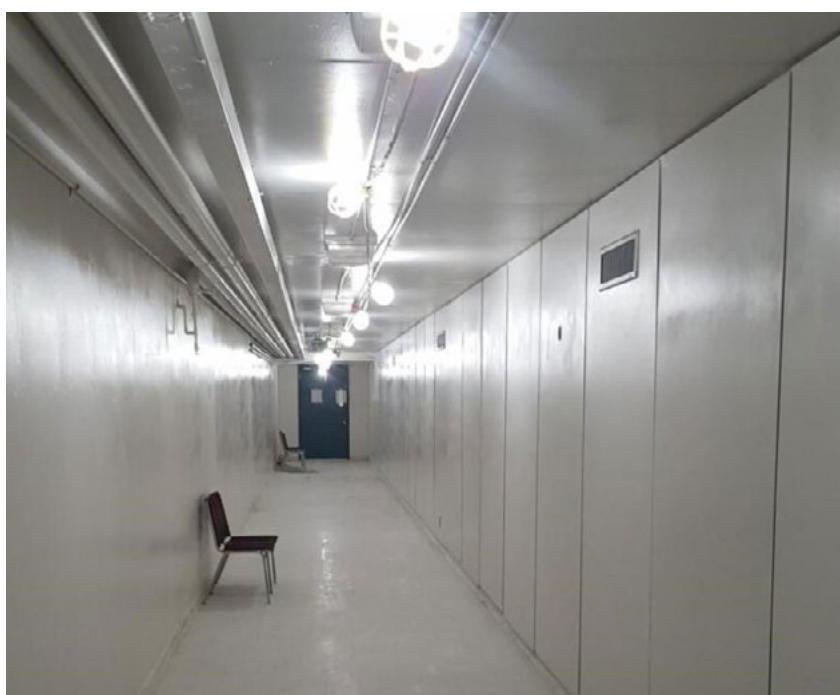
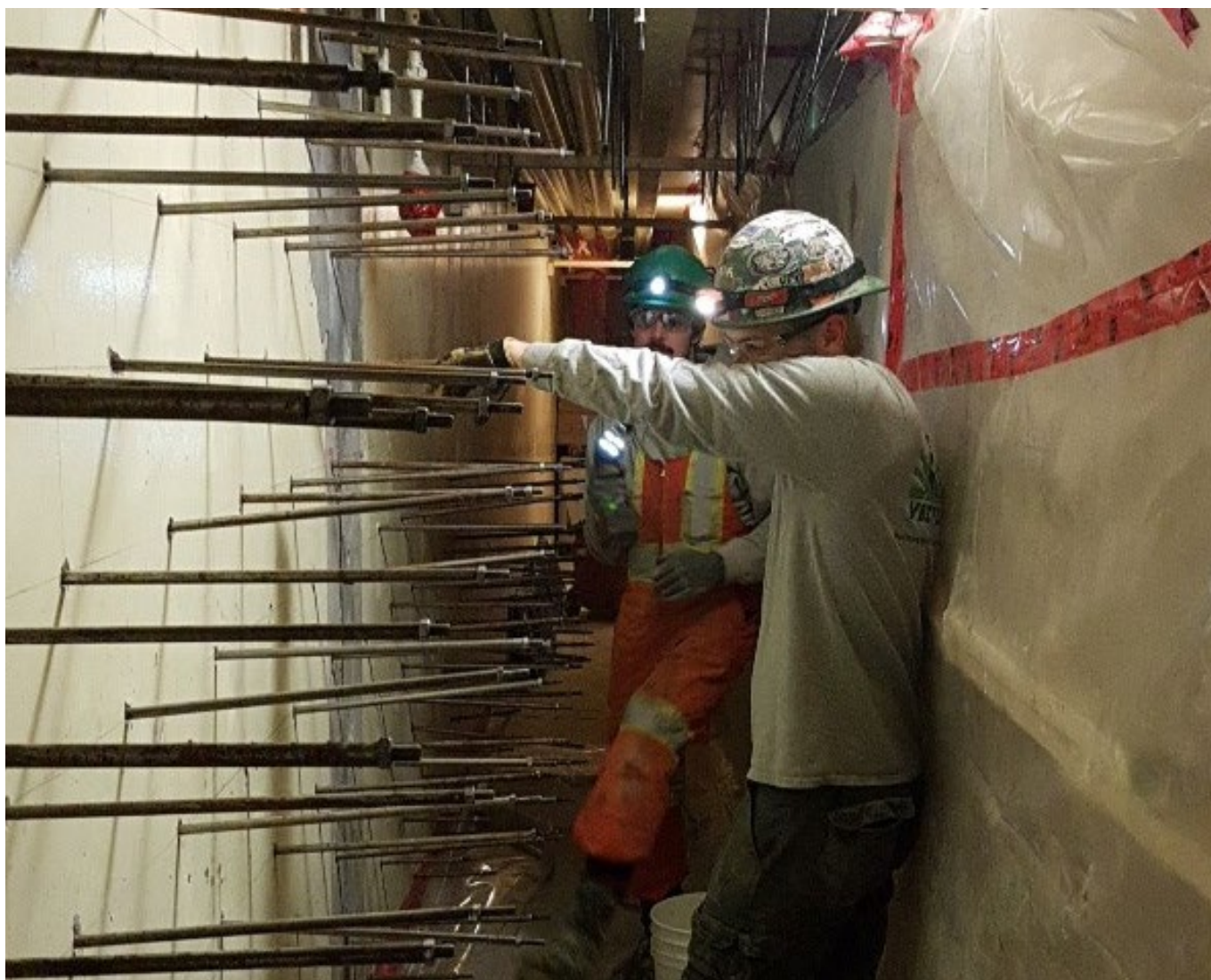
#### OCTAGON - MINISTRY OF DEFENSE

**Description:** Crack and void injection of the parking garage walls

**Products:** KÖSTER Injection Gel S4/B+







### SHONIKER TUNNEL

**Description:** Waterproofing through curtain injection, allowing to complete the tasks in half the original scheduled time, without excavation or any road or entrance closures.

**Product:** KÖSTER Injection Gel G4





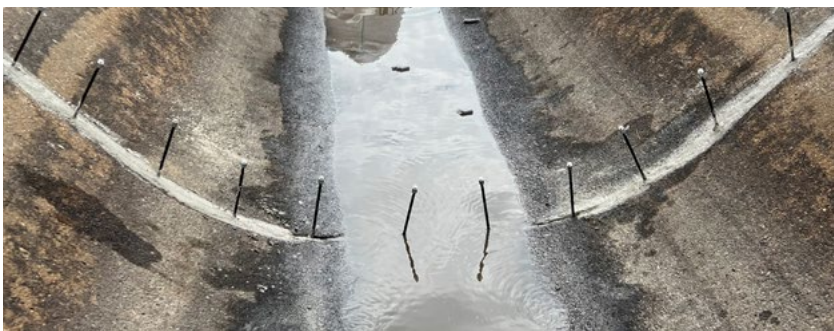
#### CAIRO METRO LINE 4

**Description:** Ground Injection to stop water overflow around the penetration.

**Product:** KÖSTER Injection Gel S4







## JOINT RENOVATION COOLING WATER DITCH

**Description:** Joint injection without  
drilling through the structure

**Product:** KÖSTER Injection Gel S4





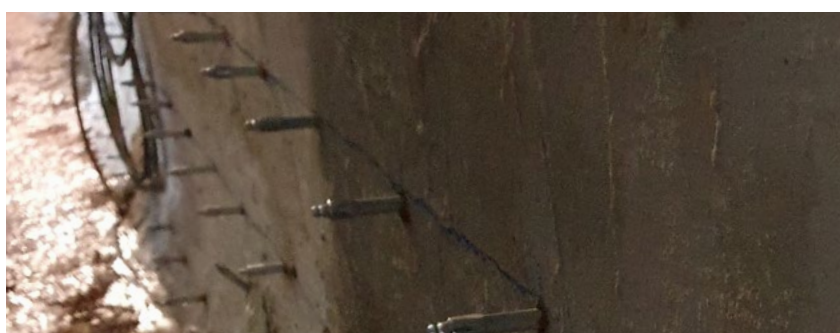
**SKATING RINK, PARK  
„PLANTEN UN BLOMEN“**

**Description:** Complete curtain  
injection in order to carry out a  
coating after drying measures

**Product:** KÖSTER Injection Gel G4







#### WEST POMERIANIAN PROVINCE OFFICE

**Description:** Waterproofing of brick walls of the underground part of the building.

**Product:** KÖSTER Injection Gel G4  
KÖSTER Injection Gel S4





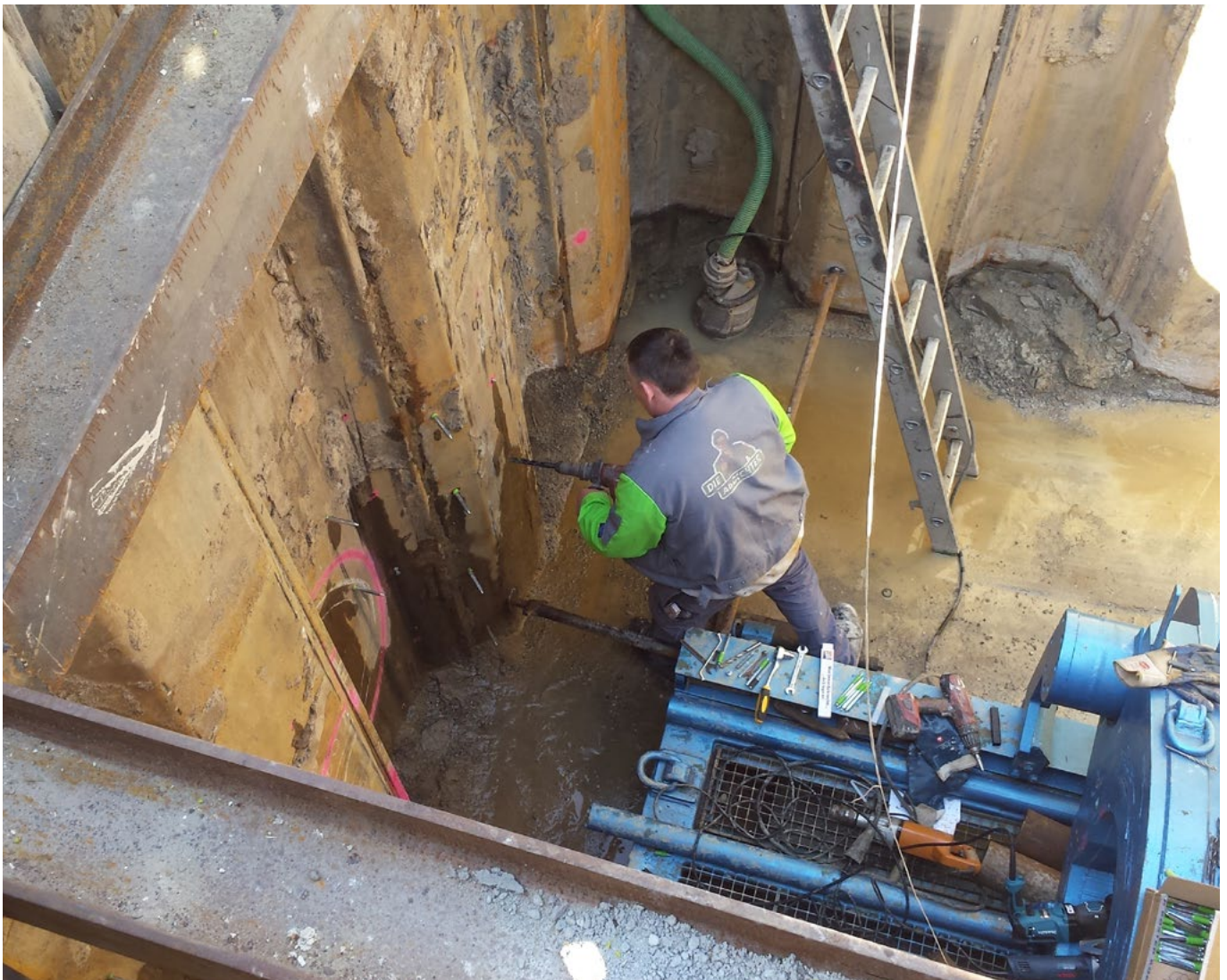
## UCI-COSTUME SHOP SCHOOL OF THE ARTS

**Description:** Curtain injection in  
underground areas

**Product:** KÖSTER Injection Gel G4







### SEALING THE DRIVE-IN SHAFT OF A TUNNELING MACHINE

**Description:** Curtain injection to secure and stabilize the soil firmly behind the wall.

**Product:** KÖSTER Injection Gel G4





## UNDERGROUND RAILWAY FARRINGTON STATION

**Description:** Curtain injection and  
area injection in the underground  
railway of London, Farrington station

**Product:** KÖSTER Injection Gel G4











We are there for you – worldwide.

Issued: 9/2022

## // Contact us

KÖSTER BAUCHEMIE AG  
Dieselstraße 1–10  
D-26607 Aurich  
Tel.: +49 4941 9709 0  
E-Mail: [info@koster.eu](mailto:info@koster.eu)

[www.koster.eu](http://www.koster.eu)

Follow us on social media:



**KÖSTER**  
Waterproofing Systems



DEUTSCHE  
BAUCHEMIE

